

Collar Options 1/2"



C-2910
F, M, A, S, C, N



C-2911
F, M, A, S



C-2912
F, M



C-2914
F, M, A, S, C, N



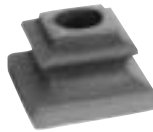
C-2915
with Set Screw
F, M, A, S, C, N

Forged Finishes

- [F] POWDER COAT
- [M] MATTE BLACK
- [A] ANTIQUE BRONZE
- [S] SATIN BLACK,
- [C] OIL RUBBED COPPER
- [N] ANTIQUE NICKEL

For viewing the finishes in color and for product detail, refer to Coffman's Forged Iron Brochure C-254.

Collar Options 9/16"



C-2916
M



C-2917
with Set Screw
M



C-2918
with Set Screw
M

Collar Options

Fits both 1/2" and 5/8" Forged Balusters. The plastic insert holds collar out of the way during epoxy installation and the base makes for perfect alignment.



C-2919
F, M, A, S, C, N



C-2929
F, M, A, S, C, N

Job-Lot Epoxy Adhesive System

C-2905 Adhesive Kit 5 oz. Adhesive Cartridge and Nozzle to be used in standard caulking gun. (Approximately 50 balusters per tube. Open work time - 6 minutes.)



C-2906 Extra Nozzle for C-2905

Medallions for use in Medallion Balusters



C-2920
M



C-2921
M



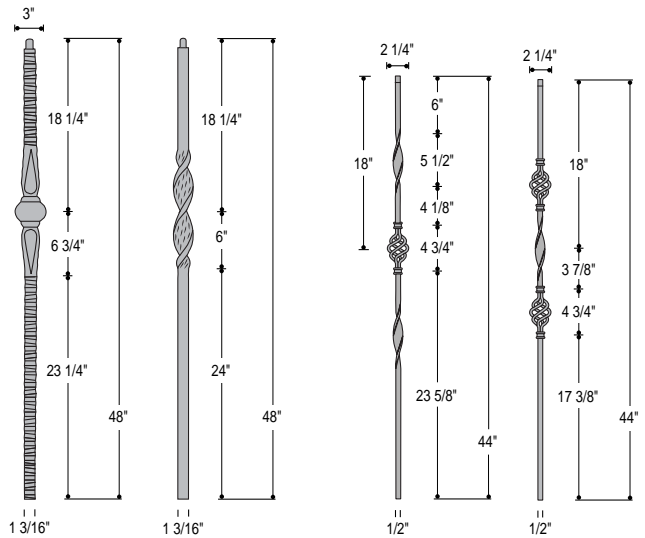
C-2922
M



C-2923
M

or C-2924 Brass Finish

The 4" Medallions above fit into the rings of the Medallion Balusters shown on page 33.

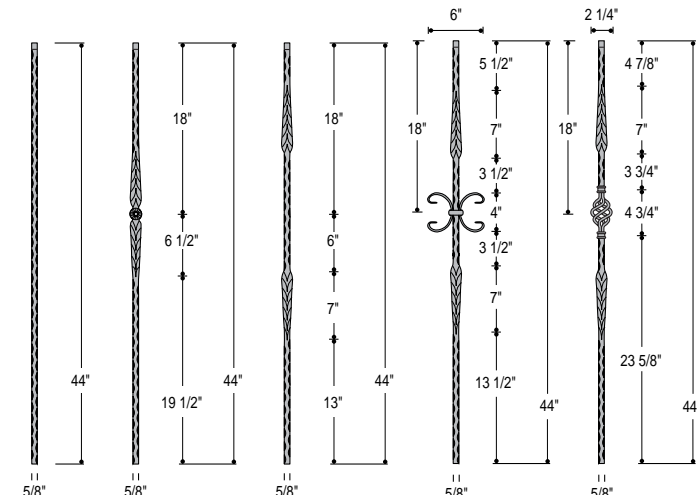


C-2940
Newel
Front View*
F, M, A, S

C-2942
Newel
F, M, A, S, C, N

C-2962
F, M, A, S, C, N

C-2963
F, M, A, S, C, N



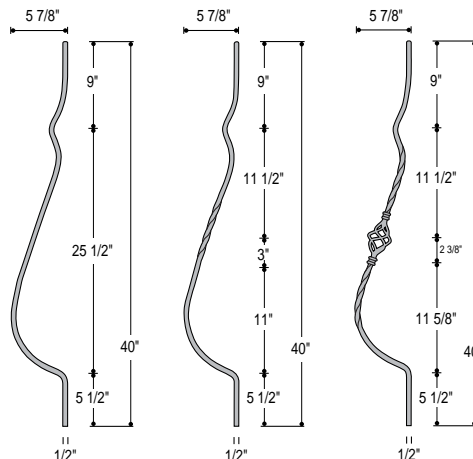
C-2995
F, M, A, S, C, N

C-2996
Front View*
F, M, A, S, C, N

C-2997
Front View*
F, M, A, S, C, N

C-2998
Front View*
F, M, A, S, C, N

C-2999
Front View*
F, M, A, S, C, N

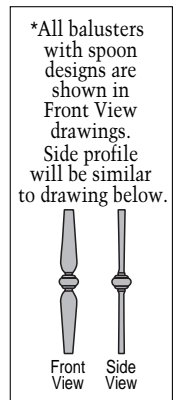


C-2986
F, M, A, S, C

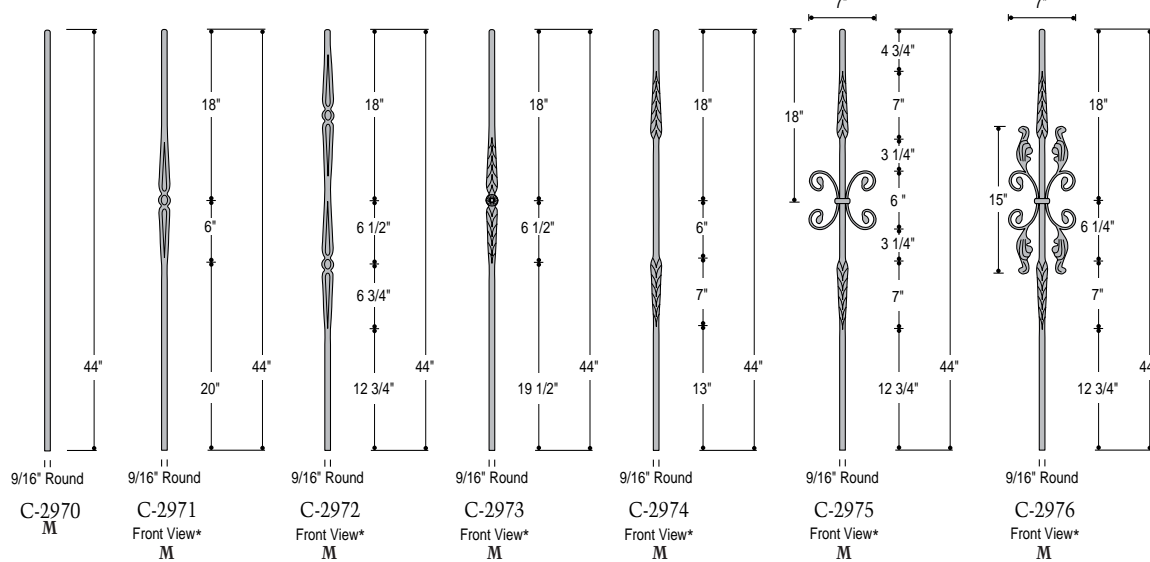
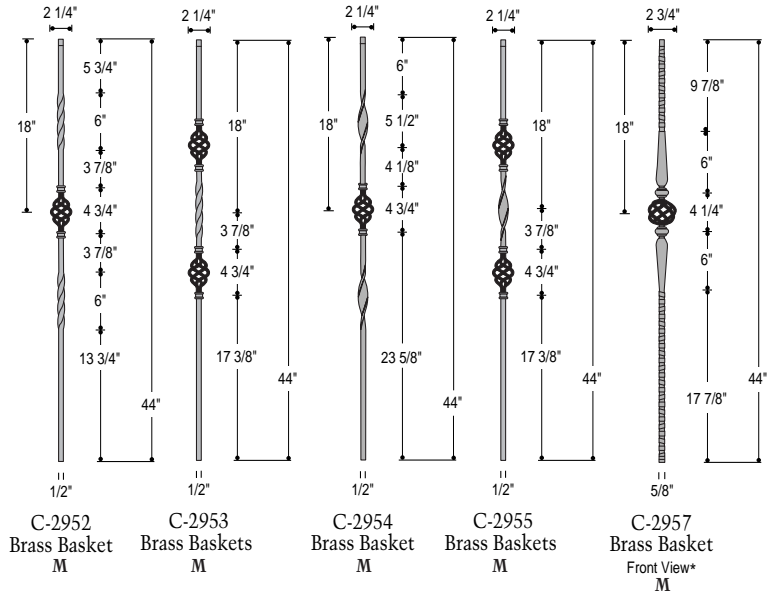
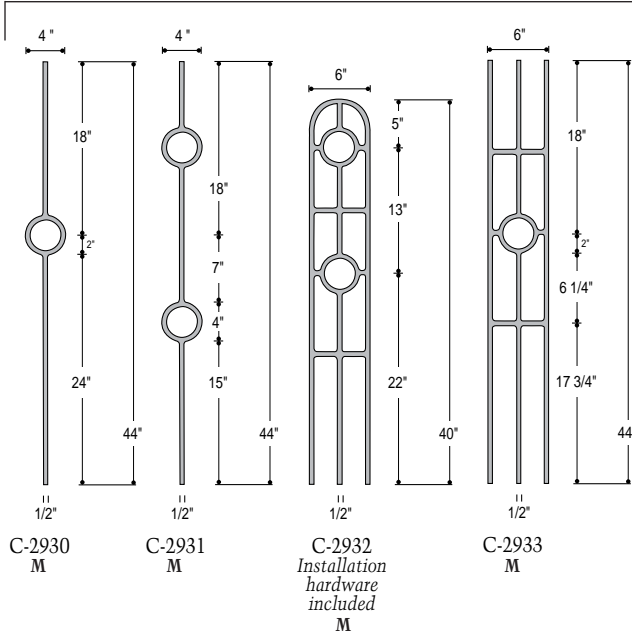
C-2987
F, M, A, S, C

C-2988
F, M, A, S, C

Belly Balusters have 1/2" Square Tops. C-2987 and C-2988 will match the C-2550 through C-2553 series.



Medallions for Balusters below are shown on Page 32. Tops are 1/2" Square.



*All balusters with spoon designs are shown in Front View drawings. Side profile will be similar to drawing below.

Front View Side View

Check local building codes when using 7" balusters.

