



C-2852 — 3/4" Hollow Core LITE-IRON™ Baluster



Forged Finishes

- (F) POWDER COAT
- (M) MATTE BLACK
- (A) ANTIQUE BRONZE
- (S) SATIN BLACK,
- (C) OIL RUBBED COPPER
- (N) ANTIQUE NICKEL

For viewing the finishes in color and for product detail, refer to Coffman's Forged Iron Brochure C-254.

We have lightened the load by making it hollow.

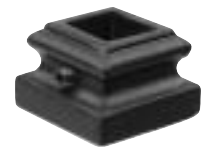
Check out our LITE-IRON™ series, the newest addition to the Forged Iron Collection. The LITE-IRON™ hollow core reduces weight while maintaining strength and is available in our BOLD 3/4".

Spectacular Results... Faster Installations!

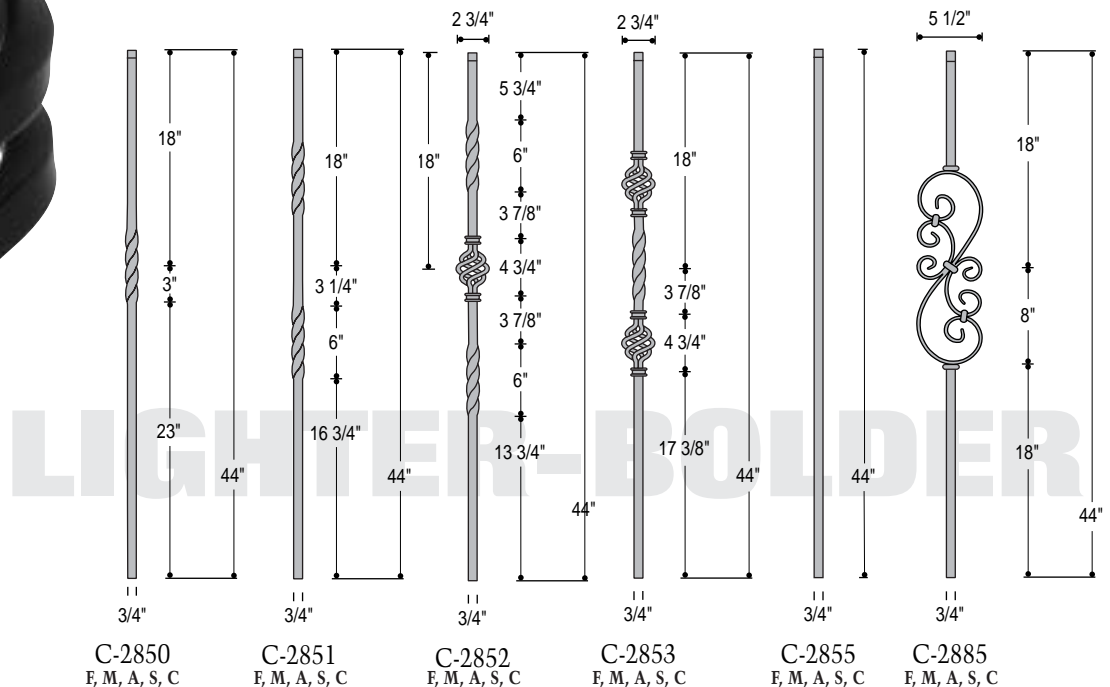
Structural tests to ICC standards, performed by an independent university testing facility, proving the integrity of our new LITE-IRON™ series are available upon request.



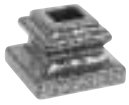
C-2390
3/4" Rake Collar with Set Screw
F, M, A, S, C



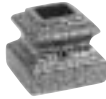
C-2392
3/4" Base Collar with Set Screw
F, M, A, S, C



Collar Options 1/2"



C-2340
Base Collar
Inside Opening 1/2"
F, M, A, S, C, N



C-2342
Base Collar
with Set Screw
Inside Opening 1/2"
F, M, A, S, C, N



C-2345
Adjustable Collar
with Set Screw
Inside Opening 1/2"
F, M, A, S, C, N



C-2350
Rake Collar 38°
with Set Screw
Inside Opening 1/2"
F, M, A, S, C, N

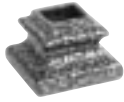


C-2360
NEWEL ATTACHING SYSTEM
Base Collar, Shaft and Screws
F, M, A, S, C, N



EPOXY GLUE SYSTEM
C-2302 Manual Dispenser
C-2301 Adhesive (Approximately
20 balusters per tube.
Open work time - 25 minutes.)
C-2303 Mixing Nozzle (Packed 10 ea.)

Collar Options 5/8"



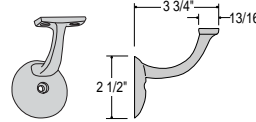
C-2341
Base Collar
Inside Opening 5/8"
F, M, A, S, C, N



C-2351
Rake Collar 38°
with Set Screw
Inside Opening 5/8"
F, M, A, S, C, N



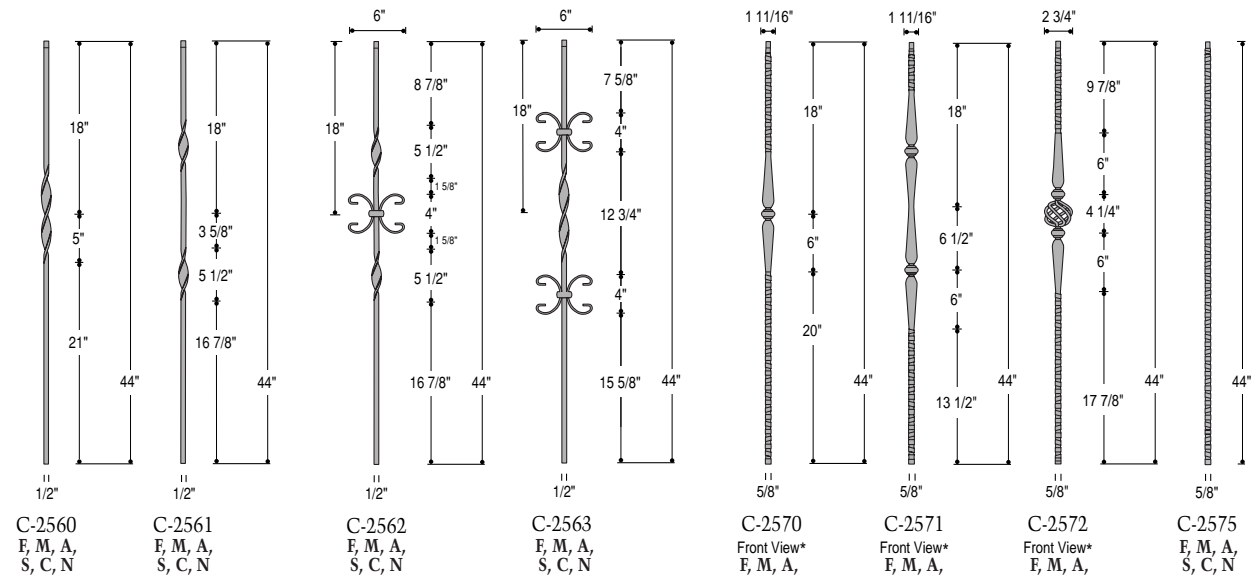
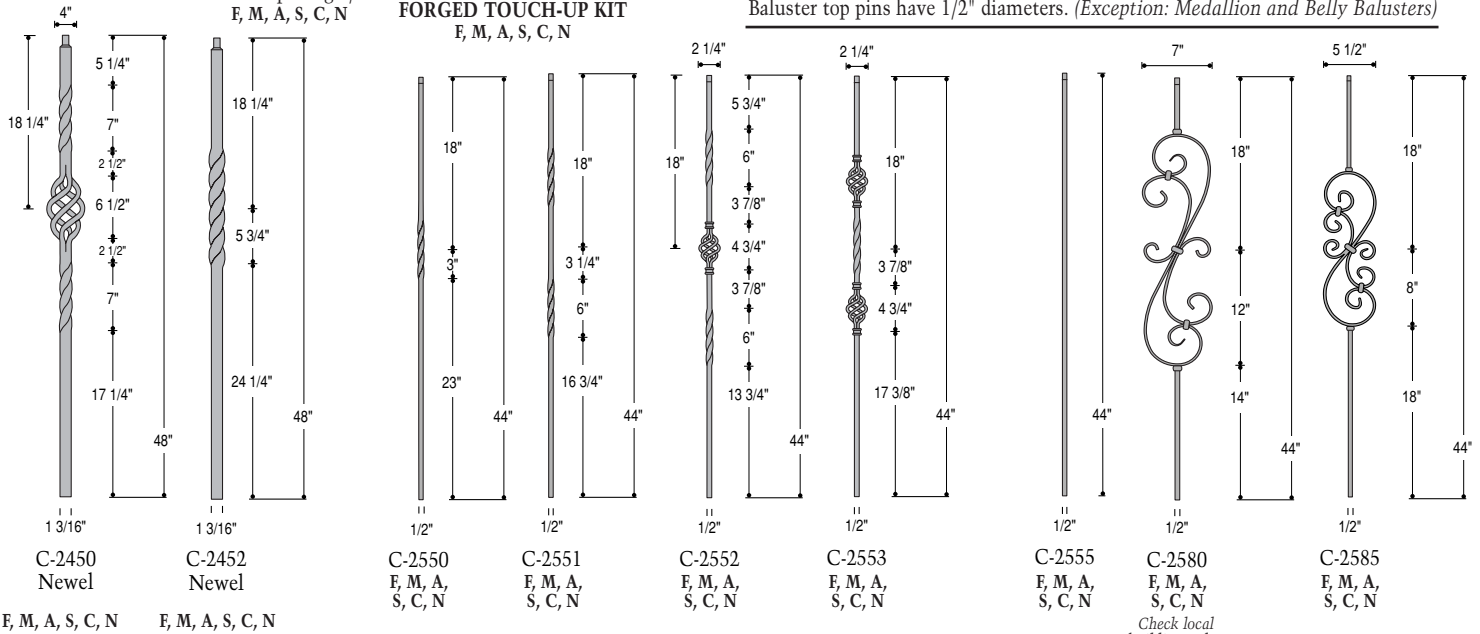
FORGED TOUCH-UP KIT
Available in six speciality finishes. Powder Coat (F), Antique Bronze (A), Oil Rubbed Copper (C), and Antique Nickel (N) consist of two touch-up paint markers. Matte Black (M) and Satin Black (S) contain a single paint marker.



C-3601
Heavy Duty
Wall Rail Bracket
F, M, A, S, C, N

C-2308
FORGED TOUCH-UP KIT
F, M, A, S, C, N

Baluster top pins have 1/2" diameters. (Exception: Medallion and Belly Balusters)



*All balusters with spoon designs are shown in Front View drawings. Side profile will be similar to drawing below.

Front View Side View

Collar Options 1/2"



C-2910
F, M, A, S, C, N



C-2911
F, M, A, S



C-2912
F, M



C-2914
F, M, A, S, C, N



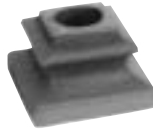
C-2915
with Set Screw
F, M, A, S, C, N

Forged Finishes

- [F] POWDER COAT
- [M] MATTE BLACK
- [A] ANTIQUE BRONZE
- [S] SATIN BLACK,
- [C] OIL RUBBED COPPER
- [N] ANTIQUE NICKEL

For viewing the finishes in color and for product detail, refer to Coffman's Forged Iron Brochure C-254.

Collar Options 9/16"



C-2916
M



C-2917
with Set Screw
M



C-2918
with Set Screw
M

Collar Options

Fits both 1/2" and 5/8" Forged Balusters. The plastic insert holds collar out of the way during epoxy installation and the base makes for perfect alignment.



C-2919
F, M, A, S, C, N



C-2929
F, M, A, S, C, N

Job-Lot Epoxy Adhesive System

C-2905 Adhesive Kit 5 oz. Adhesive Cartridge and Nozzle to be used in standard caulking gun. (Approximately 50 balusters per tube. Open work time - 6 minutes.)



C-2906 Extra Nozzle for C-2905

Medallions for use in Medallion Balusters



C-2920
M



C-2921
M



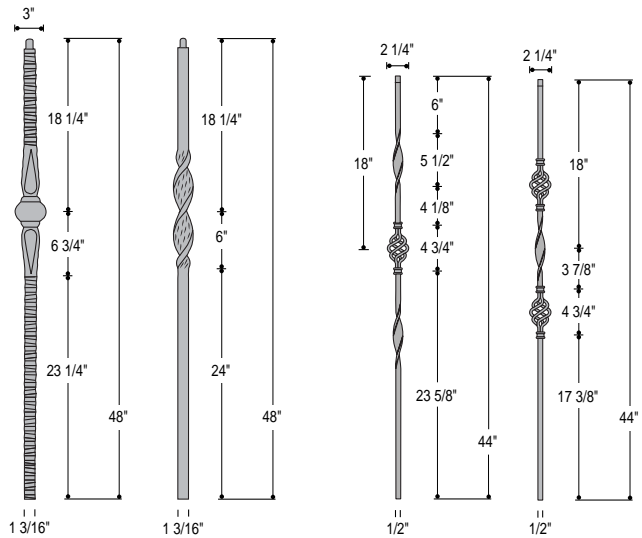
C-2922
M



C-2923
M

or C-2924 Brass Finish

The 4" Medallions above fit into the rings of the Medallion Balusters shown on page 33.

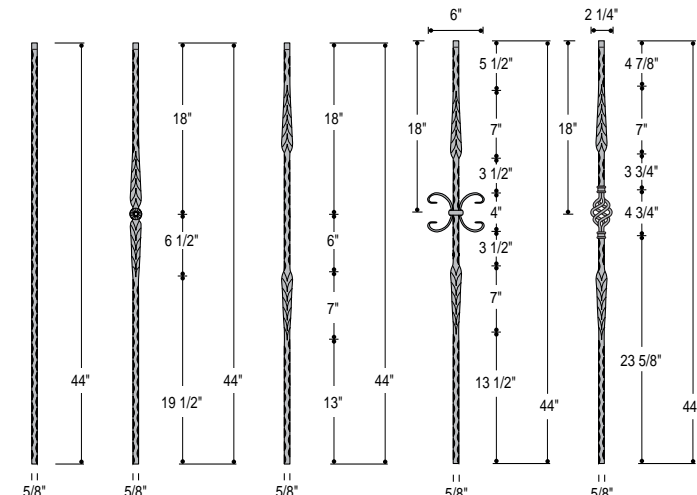


C-2940
Newel
Front View*
F, M, A, S

C-2942
Newel
F, M, A, S, C, N

C-2962
F, M, A, S, C, N

C-2963
F, M, A, S, C, N



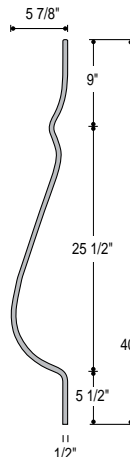
C-2995
F, M, A, S, C, N

C-2996
Front View*
F, M, A, S, C, N

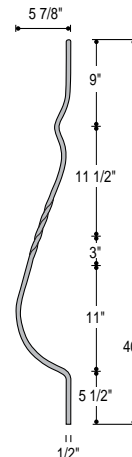
C-2997
Front View*
F, M, A, S, C, N

C-2998
Front View*
F, M, A, S, C, N

C-2999
Front View*
F, M, A, S, C, N



C-2986
F, M, A, S, C

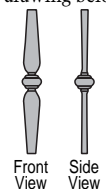


C-2987
F, M, A, S, C



C-2988
F, M, A, S, C

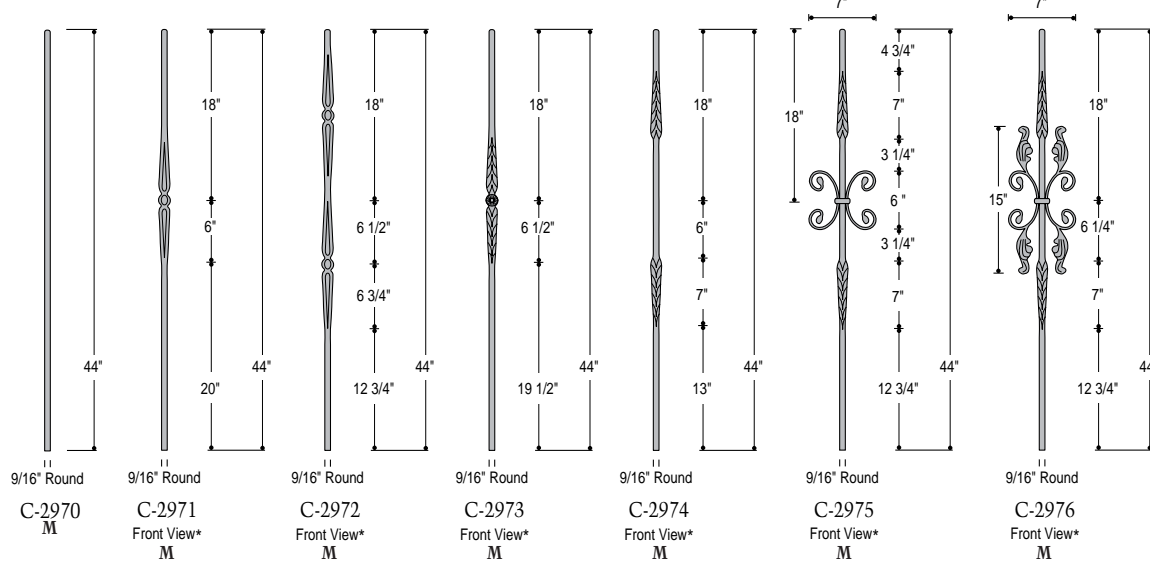
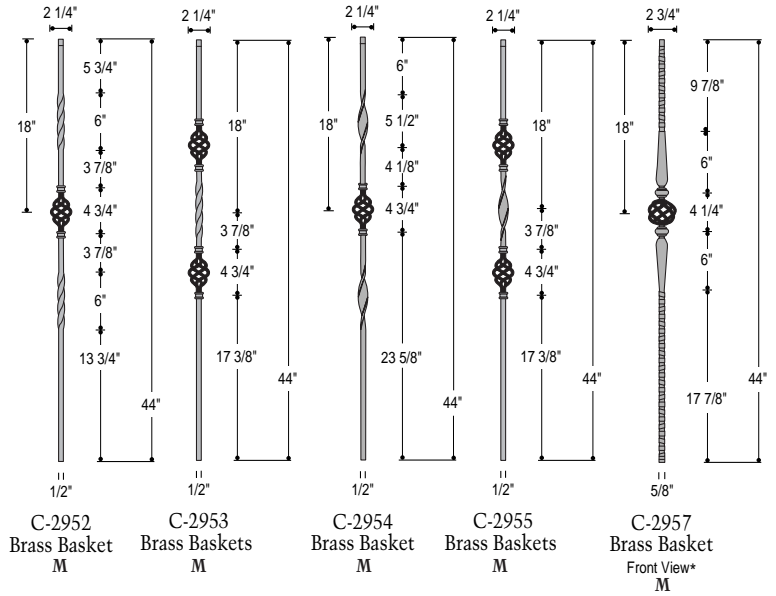
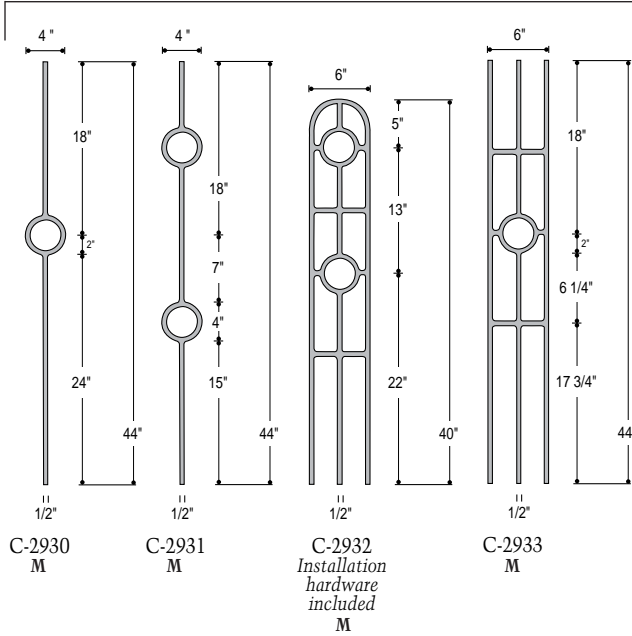
*All balusters with spoon designs are shown in Front View drawings. Side profile will be similar to drawing below.



Front View Side View

Belly Balusters have 1/2" Square Tops. C-2987 and C-2988 will match the C-2550 through C-2553 series.

Medallions for Balusters below are shown on Page 32. Tops are 1/2" Square.



*All balusters with spoon designs are shown in Front View drawings. Side profile will be similar to drawing below.

Front View
 Side View

Check local building codes when using 7" balusters.

